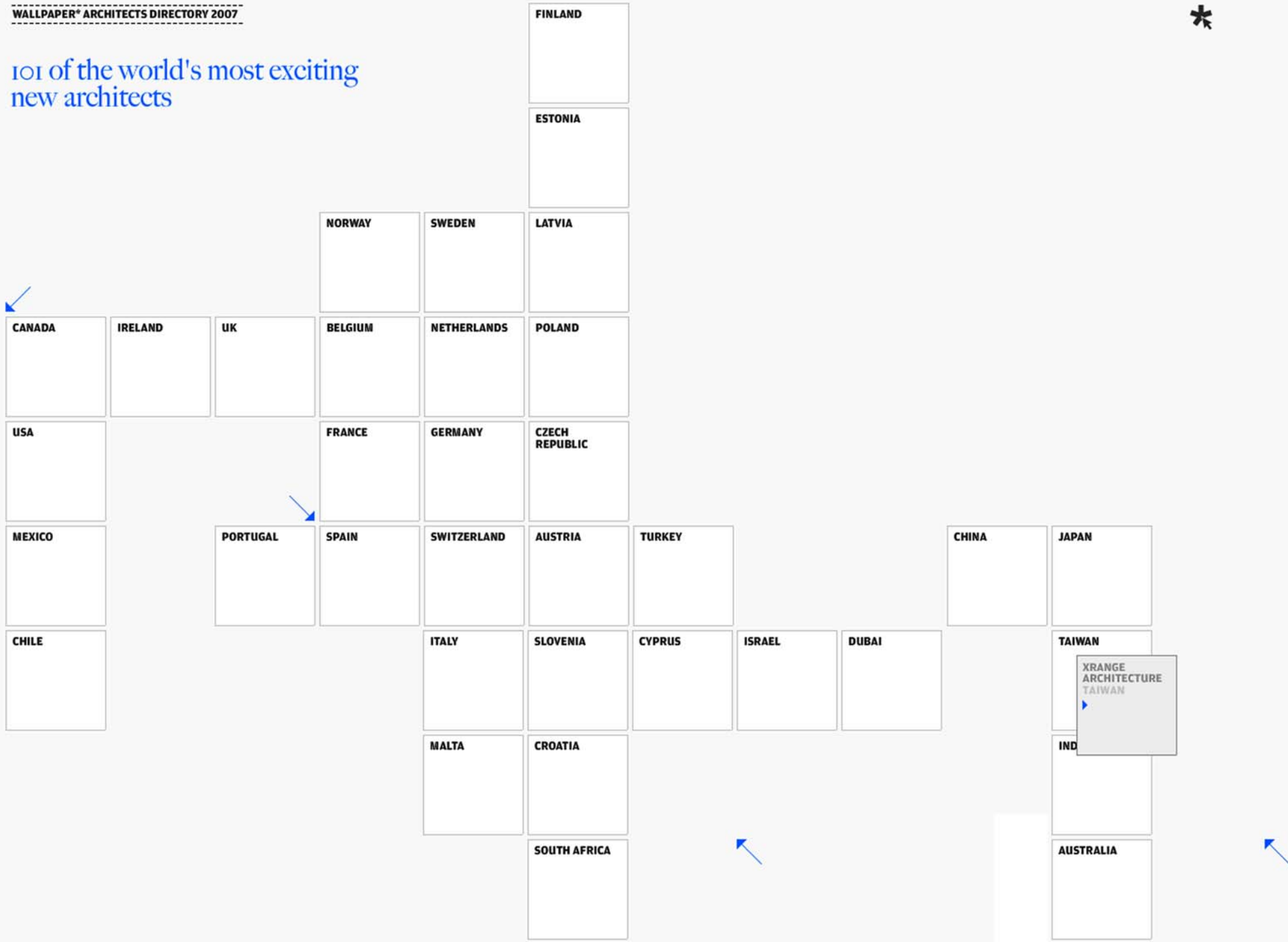




101 of the world's most exciting new architects





Every issue delivered

Subscribe to Wallpaper* All subscribers receive our fabulous limited edition covers

101

TUESDAY 17TH JULY 2007

Wallpaper*

INTERNATIONAL DESIGN INTERIORS FASHION TRAVEL

Home	Gallery	Architecture	Interiors	Fashion	Travel	Cars	Beauty	Technology	Food & Drink	Events	Art	Subscribe
01	02	03	04	05	06	07	08	09	10	11	12	13

Directory

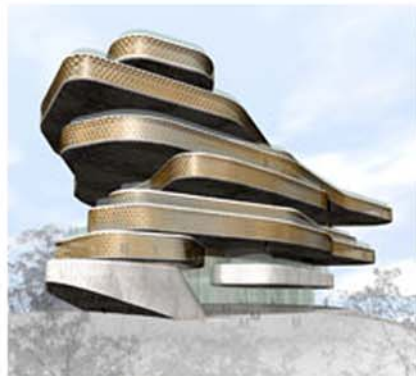


Ant Farm House

XRANGE ARCHITECTURE

Information

xrange is a multi-disciplinary studio, founded in 2003 by Grace Cheung, 37, and Royce YC Hong, 36. Cheung, a Columbia graduate, worked with Patkau Architects, Bernard Tschumi and OMA's Asian office. Hong's background was in industrial design and online marketing. Together, they created xrange to cover architecture, masterplanning, environments, products and concepts.



Sun Moon Lake Hotel concept

Inspiration

Describing themselves as having a 'a uniquely Asian point of view', the studio's architectural approach has to work with the 'impossible programmatic demands of our clients... unforgiving urbanism and a less-than-sophisticated construction industry'. Nonetheless, the studio continues to be inspired by the 'banal and the everyday - technology and contemporary and street art are also mind-openers for us,' they say.

Innovation

Their wide-ranging skills means a broad portfolio, including a resort hotel, mixed-use urban block, a 'tower house' for two musicians and hi-tech product designs like a Skype-enabled handset. Totally au fait with the very latest in CAD and CAM, xrange is uniquely placed to synthesise architecture and design. Tomorrow's architecture, they claim, 'will be made like a giant industrial product - an emission-free super concrete that is structure, skin and interior'. The studio's Ant Farm House wraps a traditional stone building with a thin layer of new function.

9 July 2007 | Directory

- SUBSCRIBE TO WALLPAPER*
- PRINT THIS ITEM
- RSS FEED