

Architect~
xrange

Clients~
The Ambassador
Hotel, China Prosperity
Development Corp.

Consultant~
Taiwan Construction
Research Institute

Total surface (m²)~
25,500

Total cost (US\$)~
30 million

Budget per m² (US\$)~
1175

Design completed~
2006

Website~
www.xrange.net

Renderings by
xrange

Certain to 'come out on top' with this project, Taipei-based architecture firm xrange has designed a 120-room boutique hotel, complete with international conference facilities, for the peak of the towering mountain range that surrounds Sun Moon Lake. An impressive site that once boasted a residence owned by Chiang Kai-shek, the location commands a vast panorama of the scenery that has made Taiwan's largest lake a popular destination for tourists. Responding to the spectacular views, the designers envisioned a building whose form and situation would offer guests a 360° vista—an experience 'moulded' from the natural boundaries set by slopes too steep for construction and including vast groves of existing

trees. Stretched to its maximum, the footprint of the building utilizes the horizontal expanse of the site. The contoured forms of the architecture hover above the treetops, evoking images of geological or meteorological effects akin to swirling clouds or windswept rock striations. Continuously transforming, the geometry of exterior screen walls makes the curvaceous planes of the building appear to revolve. Each floor of the hotel is a prestressed, prefabricated structural unit. These units are stacked in a seemingly haphazard, organic manner to create generous, sweeping overhangs featuring amenities such as rooftop patios, terraces and observation decks.

01~
A foot at one side of the base of the building accommodates an auditorium that opens directly onto decks, offering business people assembled at the hotel for meetings or congresses a momentary escape from lengthy lectures.

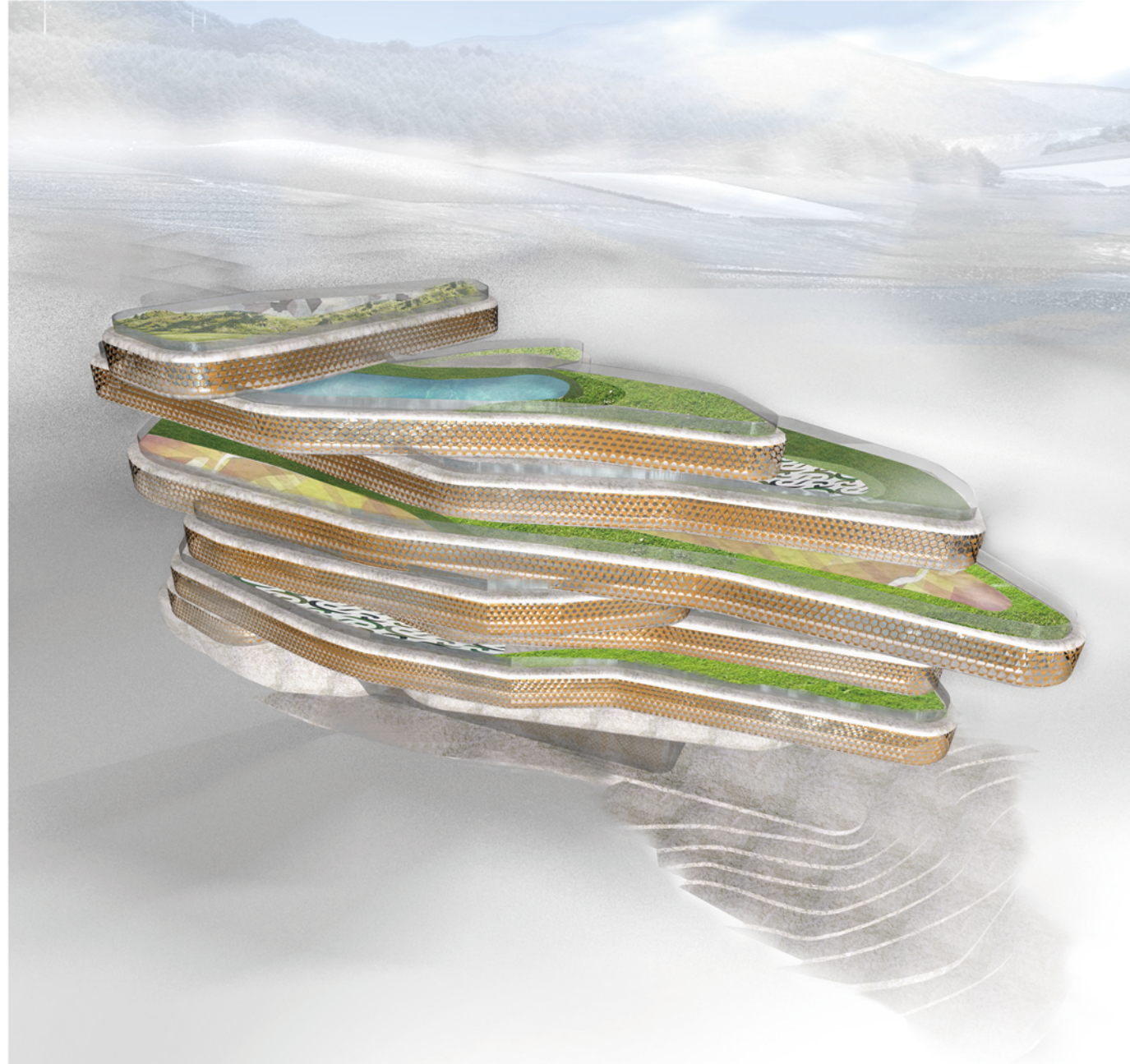
02~
Various garden decks are found throughout the hotel. The top 'slab' houses a banquet room, complete with pool and spacious deck.

03~
The simple design of guest-room interiors emphasizes the vast horizontal planes of the lake, visible from the windows. In each room, a sleeping platform extends to become a desk and an eco-friendly fireplace.

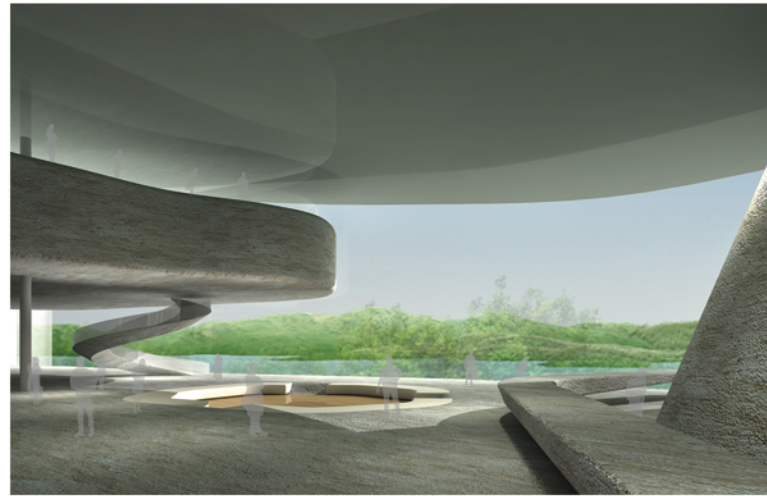
04~
View of the reception counter (right) and restaurant (left) of Sun Moon Lake, a Taiwanese boutique hotel designed by xrange.



01



02



04



03

Sun Moon Lake Hotel Nantou County, Taiwan